

# Equipment Specifications

## Dominion Warrior

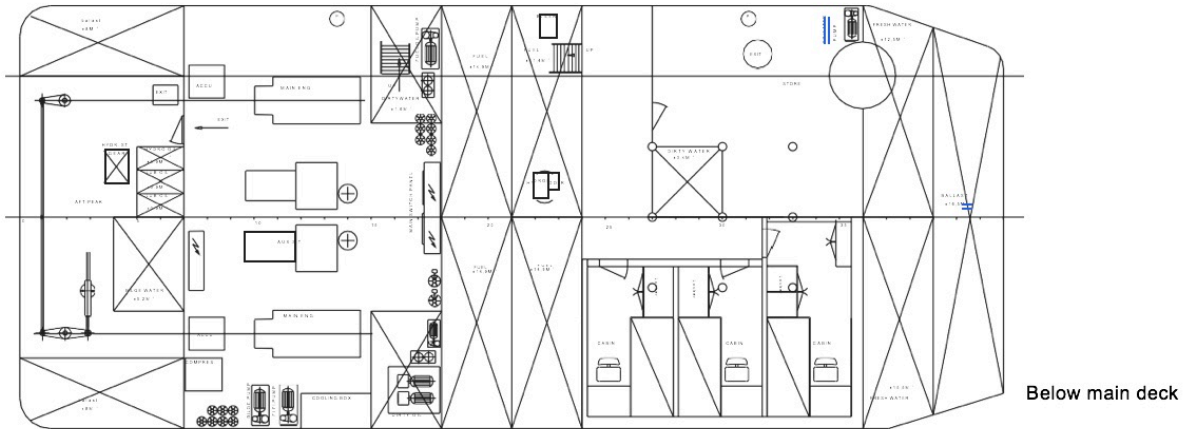
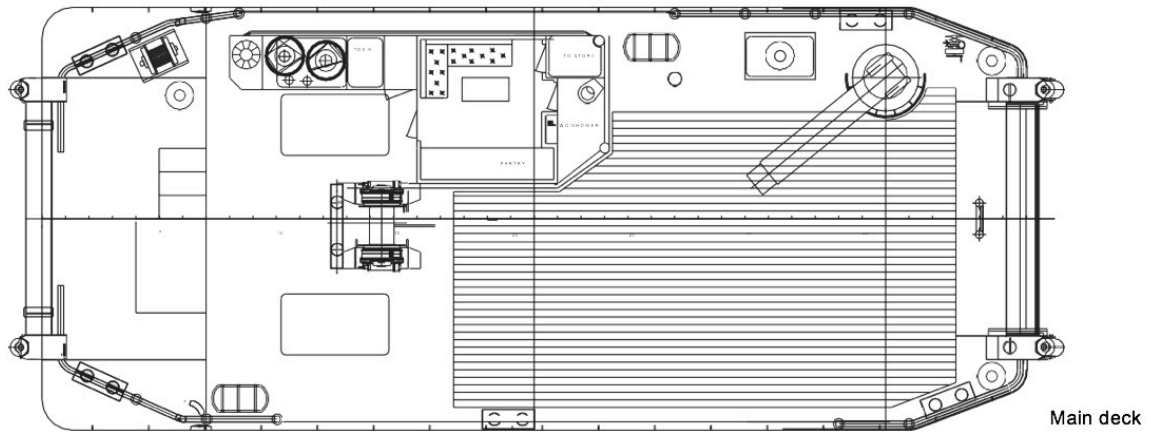
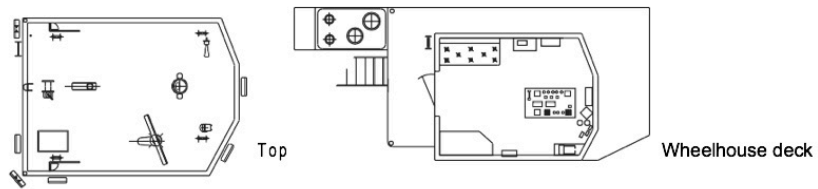
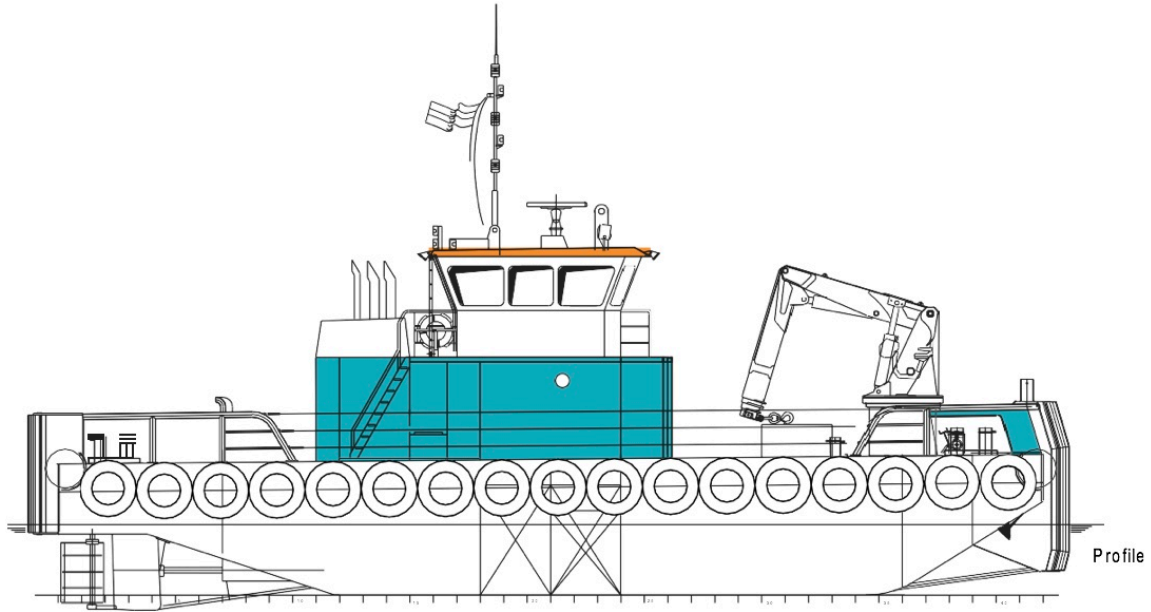


The Dominion Warrior is an adaptive, shallow draft, cargo carrying tug that is ideal for beach landings, cargo operations, all types of towing operations, delivery of bulk stores, provisions, and potable water, geophysical oceanographic survey, and Diving and ROV and manned diving operations.

Dominion Warrior is a multi-purpose ship that boasts 67m<sup>2</sup> of available forward free deck space, 40m<sup>2</sup> of available aft deck space, and a maximum deck load of 6 ton/m<sup>2</sup>. Total deck cargo capacity is 100 Tonne.

Below deck offers a galley with table seating, washroom facilities, and both double and four-berth cabins.

Official Number:	9520338 (IMO)	Gross Tonnage:	135
Voyage Certificate:	Near Coastal Voyage Class I (<200 nm)	Net Registered Tonnage:	40
Classification Society:	Bureau Veritas	Length:	21.6 metres
Class Ship Type:	Tug	Beam:	9.04 metres
Port of Registry:	Halifax, Nova Scotia	Max Draft:	2.05 metres
POB:	8 Personnel	Min Draft:	1.5 metres
Propulsion:	Twin fixed pitch propellers in nozzles	Main Engines:	2 x CAT C-18 ACERT 447 kW 894 kW / 1200 HP
Speed:	9.5 knots	Aux Engines:	2 x John Deere 4045 85kVA-400V/50Hz
Bollard Pull:	15 ton		
Hydraulic Deck Crane:	Heila 170-4S (30 Tonne)	Fresh Water:	28m <sup>3</sup>
AHT Deck Winch:	50 ton - 7m/min	Fuel:	56m <sup>3</sup>
Tugger Winch:	25 ton - 21m/min	Sewage:	1.6m <sup>3</sup>
MH Towing Hook FS:	10 ton - 12m/min	Black/Grey Water:	5m <sup>3</sup>
MH Towing Hook MS:	SWL 15 ton	Dirty Oil:	1.6m <sup>3</sup>
	SWL 15 ton	Ballast Water:	32m <sup>3</sup>



Dominion Diving Limited  
 7 Canal Street, Dartmouth, Nova Scotia, Canada  
 Tel: 902-434-5120 | Fax: 902-463-7966  
[www.dominiondiving.com](http://www.dominiondiving.com)